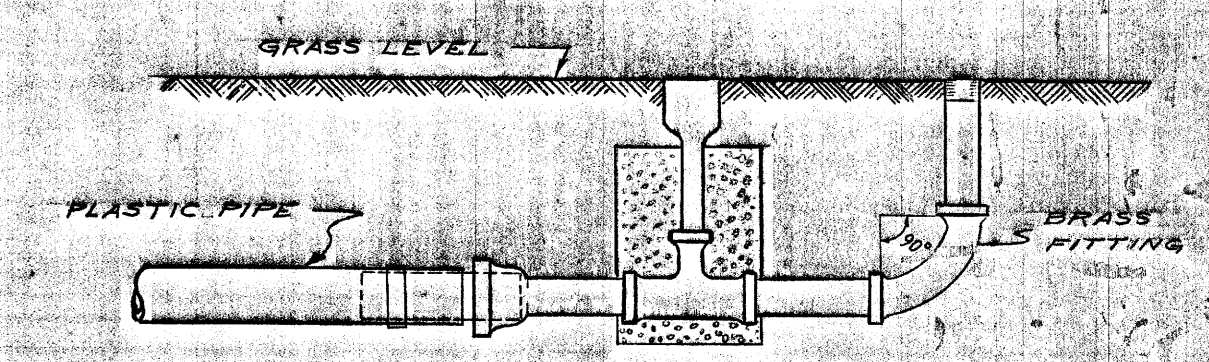
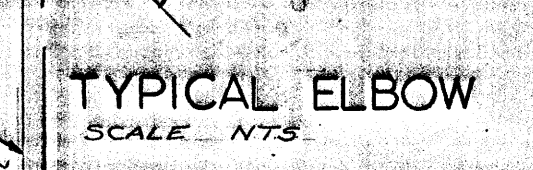
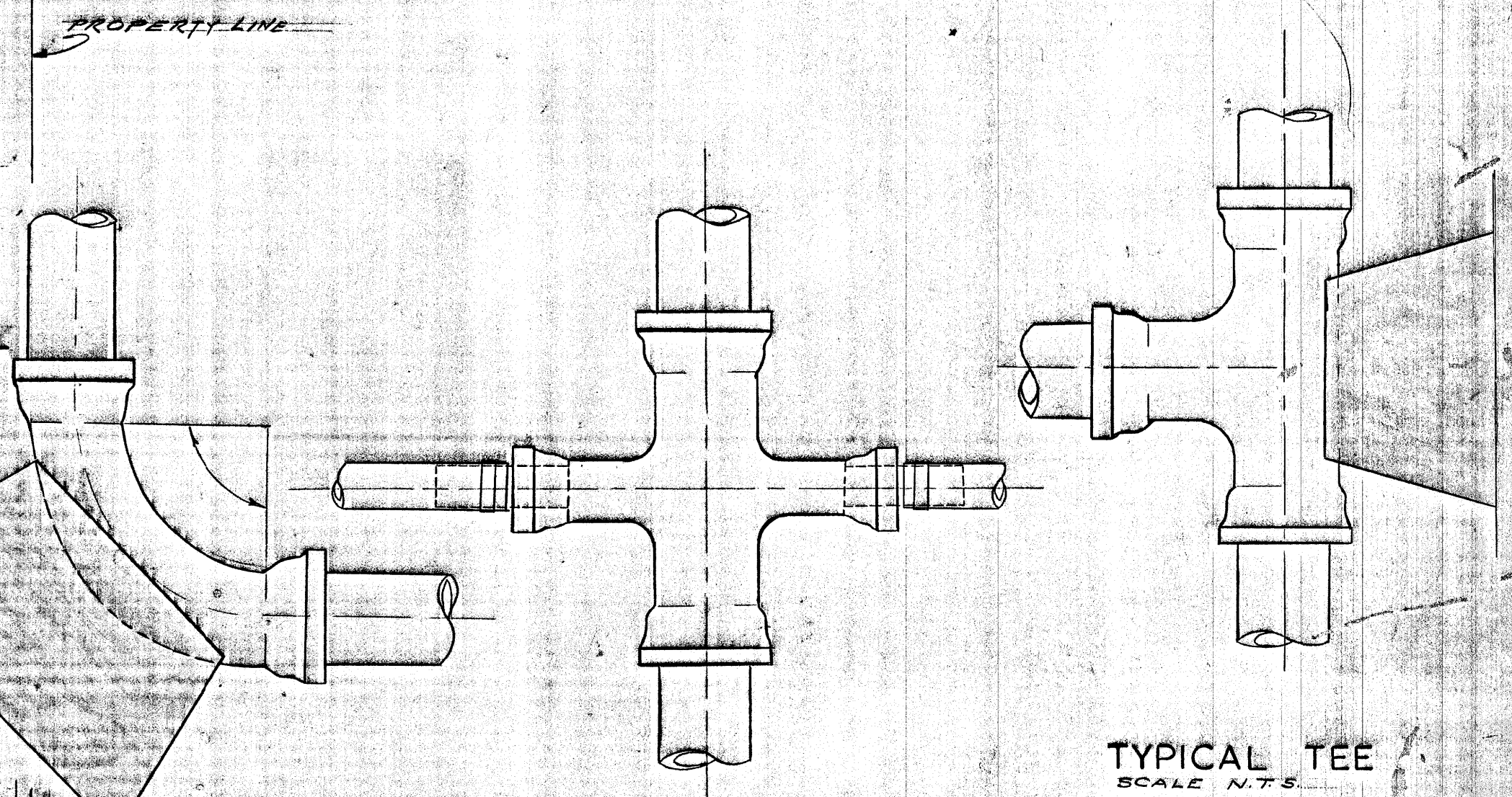


PIPE D.A.	MIN. BEARING AREAS OF THRUST BLOCKS		
	TEES & DEAD ENDS	90° BENDS	45° BENDS
6"	7 SQ. FT.	10 SQ. FT.	22 1/2"



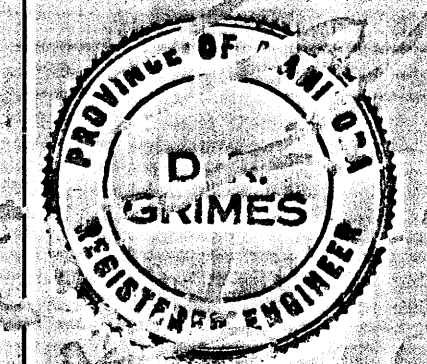
**LEGEND**

- ⊙ RAIN BIRD MODEL NO. 27
- ⊕ RAIN BIRD MODEL NO. 31
- ⊗ RAIN BIRD MODEL NO. 41
- ⊠ RAIN BIRD MODEL NO. 1715
- ▲ BLOW OFF POINTS
- 6" ASBESTOS CEMENT WATERMAIN
- - - PLASTIC PIPE
- ⊕ VALVE & VALVE BOX
- ⊙ 3/4" HOSE CONNECTION
- - - UNDERGROUND GALLERIES
- SHADED AREA WITHIN SHADED PORTION SHALL BE SEEDED.

**NOTE:**  
THE CONTRACTOR SHALL REPLACE ALL BLOW OFF POINTS BY HIM DURING CONSTRUCTION.

**REVISIONS**

NO.	DATE	DETAIL



THE METROPOLITAN CORPORATION OF GREATER WINNIPEG  
WATERWORKS AND WASTE DISPOSAL DIVISION

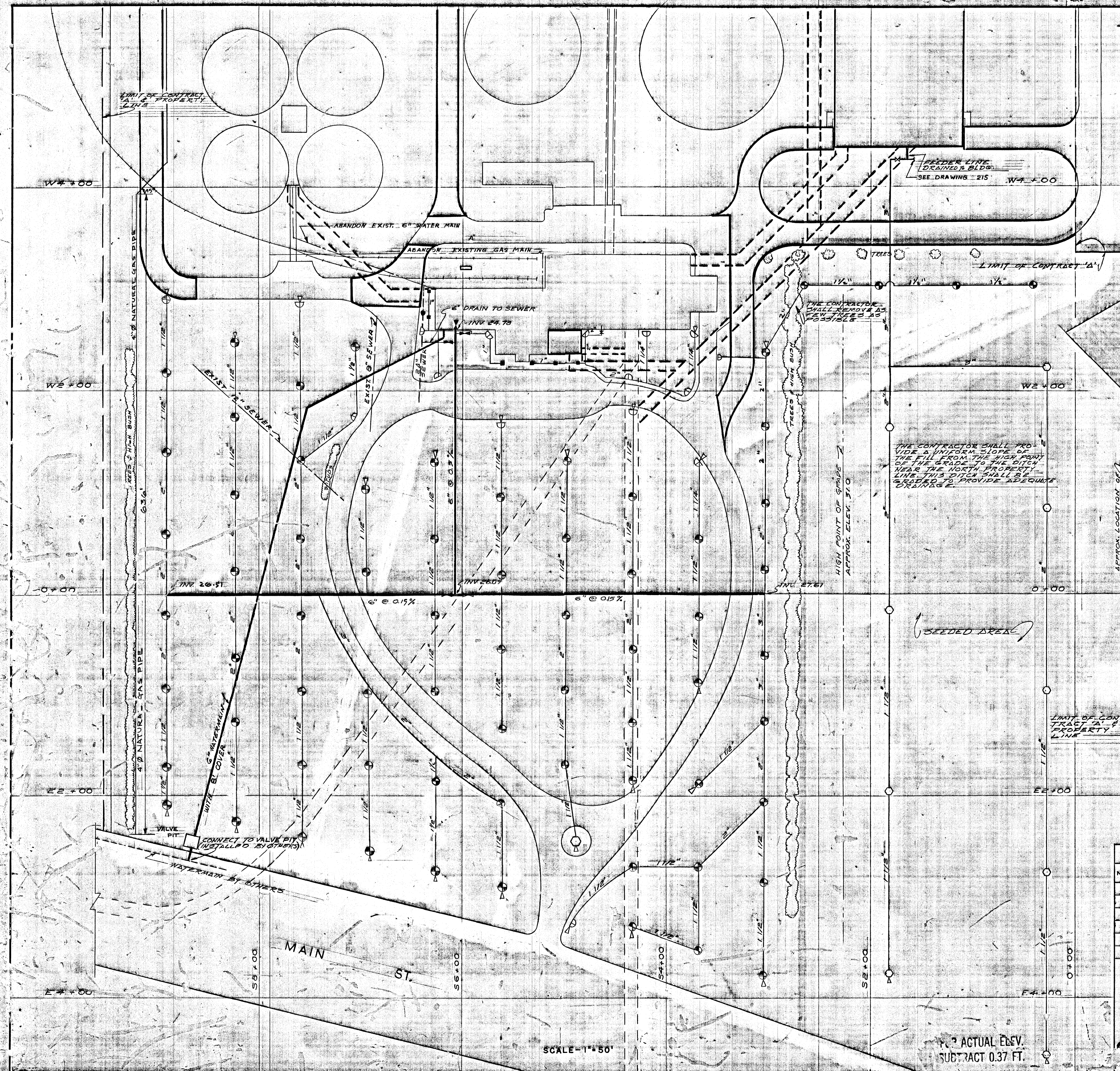
**NORTH END SEWAGE TREATMENT PLANT  
CONTRACT A- MISCELLANEOUS  
LAWN SPRINKLER LAYOUT  
EAST OF MAIN BUILDING**

JAMES F. MACLAREN LIMITED  
ENGINEERS  
TORONTO

W.L. WATSON & ASSOCIATES  
(MANAGEMENT CONSULTANTS)  
ENGINEERING CONSULTANTS  
WINNIPEG

APPROVED  
ENGINEER OF SEWERAGE  
A. P. ...  
ENGINEER IN CHARGE  
DIRECTOR & ...

DATE: MARCH 11, 1966 AS SHOWN  
DWG. NO. 217  
NEP-214



NEP-0214